

ONADAP

A visualization and decision support tool for dynamic human
and material resources allocation within healthcare
facilities in times of sanitary crisis

1. General context

2. The ONADAP project

3. The Beta version

1. General context

1. General context

- Major concern from the beginning of the Covid-19 pandemic:
the contamination among the hospital staff
- Massive disorganization of the hospital structures while
preparing for incoming waves of contaminated patients
- Urgent need for a real time decision support system

No *relevant* data within the existing databases



The system needs to include the possibility to feed an
ad hoc database

How can a structure which is in the middle of a crisis
integrate new protocols for collecting relevant data?

2. The ONADAP project

2. The ONADAP project

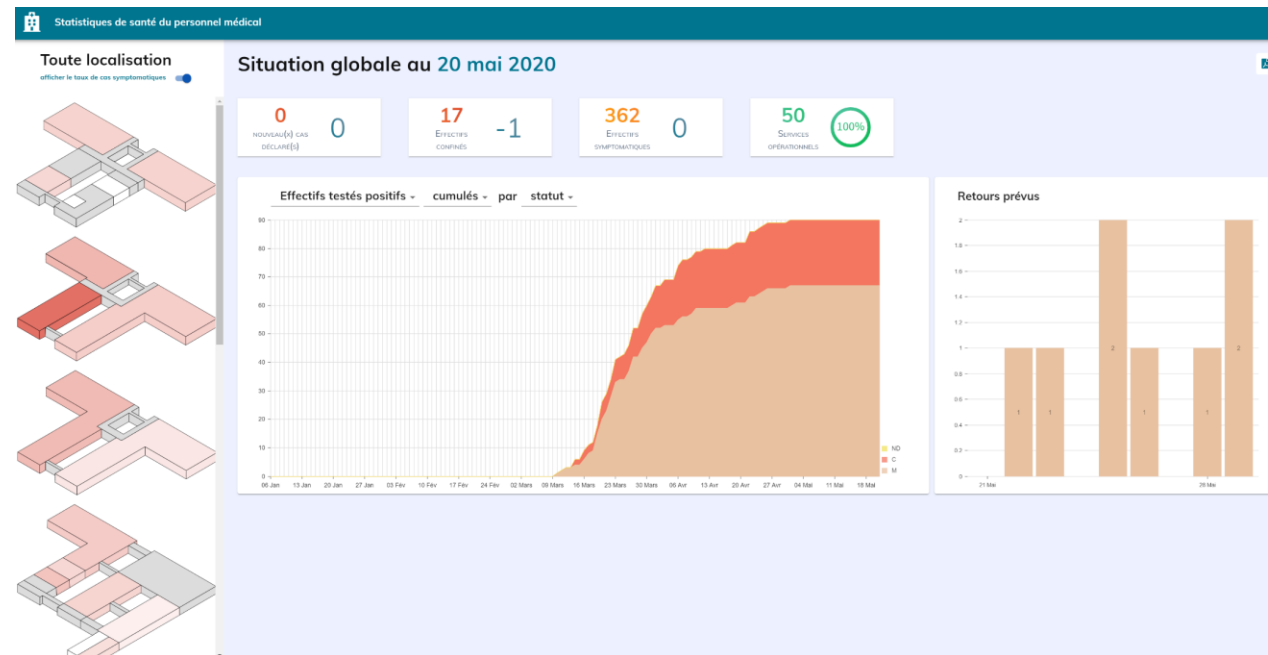
The tool

- Software installed on a tablet, for the decision makers (chiefs of departments, occupational healthcare services, hospital direction)
- **Integrated forms allowing the user to feed a database**
- Access to an *automated daily report, visualizations* (heatmaps, graphics) and *health indicators* for:
 - I. **Staff** – track (in time) symptomatic staff, interactions between the different departments, seroepidemiologic study
 - II. **Patients** - highlight overloaded departments, material resources availability, potential non-dedicated risk areas
 - III. **Simulation and decision support** - simulation of virus propagation, comparison of resources allocation strategies and organization schemes

3. The Beta version

3. The Beta version

First version of the interface



First version of the report

Point situation du personnel, Hôpital X

Le 21/05/20

Contents

1 Vue Globale	3
1.1 Récapitulatif de la situation cumulée depuis le 06/01/20 . . .	3
1.2 Récapitulatif des dernières 48 heures	4
1.3 Évolution au cours du temps	5
2 Vue par service	6
2.1 Service H	6
2.2 Service C	8
2.3 Service U	10
2.4 Service N	13
2.5 Service G	15
2.6 Service V	17
2.7 Service Y	20
2.8 Service M	22
2.9 Service K	24
2.10 Service X	27
2.11 Service L	29
2.12 Service O	31
2.13 Service E	34
2.14 Service R	36
2.15 Service CA	38
2.16 Service S	41
2.17 Service IA	43
2.18 Service AA	45
2.19 Service W	48
2.20 Service P	50
2.21 Service J	52
2.22 Service GA	55
2.23 Service D	57
2.24 Service B	59
2.25 Service SA	62
2.26 Service nan	64
2.27 Service ND	66
2.28 Service A	69
2.29 Service WA	71
2.30 Service BA	73
2.31 Service LA	75
2.32 Service Q	78

Ce document réunit les chiffres clés en date du 21/05/20 concernant le personnel de l'hôpital X présentant ou ayant présenté des symptômes viraux depuis le début de l'épidémie de Covid-19 due au virus SARS-CoV-2.

1 Vue Globale

1.1 Récapitulatif de la situation cumulée depuis le 06/01/20

Statut	Catégorie	Ayant présenté des symptômes		
		Covid+	Covid-	
M	MED	72	20	43
	PARAMED	126	34	59
	AUTRE	51	13	29
	Total	249	67	131
C	MED	2	1	0
	PARAMED	57	14	26
	AUTRE	52	8	29
	Total	111	23	55
TOTAL		360	90	186

Statut	Catégorie	Résultat douteux Non testés En attente de résultat		
		Résultat douteux	Non testés	En attente de résultat
M	MED	0	7	2
	PARAMED	2	24	7
	AUTRE	0	9	0
	Total	2	40	9
C	MED	0	1	0
	PARAMED	1	11	5
	AUTRE	0	11	4
	Total	1	23	9
TOTAL		3	63	18

Statut	Catégorie	En arrêt Revenus Hospitalisés Ayant été hospitalisés			
		En arrêt	Revenus	Hospitalisés	Ayant été hospitalisés
M	MED	1	71	0	1
	PARAMED	9	117	0	0
	AUTRE	0	51	0	2
	Total	10	239	0	3
C	MED	0	2	0	0
	PARAMED	5	52	1	2
	AUTRE	2	50	1	2
	Total	7	104	2	4
TOTAL		17	343	2	7



Thank you



Partners : HIA Percy, IRBA, INSEAD